

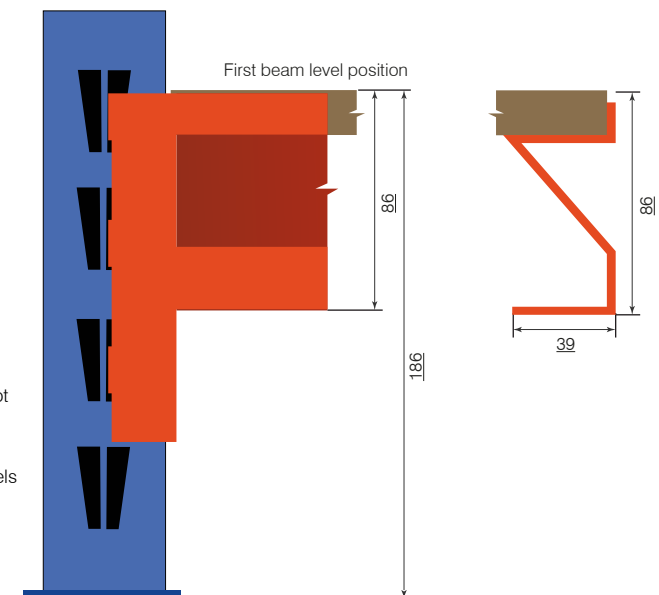
1. Check the upright is the correct way up with the metal footplate at the bottom. Position the first horizontal brace in the second hole up (66mm) from the footplate and fix with the M6x50 nut & bolt provided. Use the spacer blocks for non-overlapping bracing. Position the remaining bracings per frame. (*layout provided overleaf*) The height of the frame will dictate the quantity of horizontal & diagonal bracings required per frame.

2. The first beam level can be positioned anywhere up to 1000mm from the floor, it is crucial that this maximum is adhered to. The system is designed for hand-loaded goods. Forklifts should not be used to load the system.

Starting from the bottom, position your front and rear Z profile beams at your desired height, slot the 3 clawed beam ends into the slots in the frame and tap down with a rubber mallet. Apply safety pins to the beams you have just installed, this will aid in preventing any upward force from knocking the beam out of the frames.

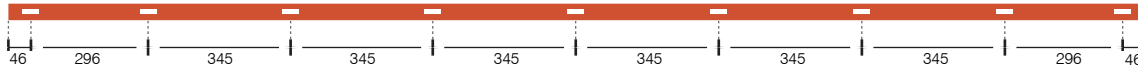
3. Deck supports are only required in bays 610, 762, 915 & 1220mm deep, if this does not apply to you please continue to next step. Deck support quantities & positionings provided (*Please See overleaf*)

4. Once all applicable levels have been installed, the Chipboard, Steel or Wire Mesh panels are ready to be placed into the beams.

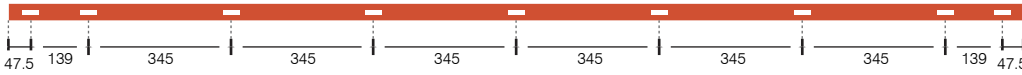


Longspan - Deck Support Positions

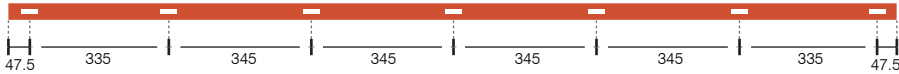
L 2754mm



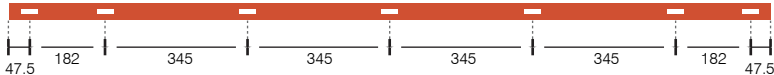
L 2449mm



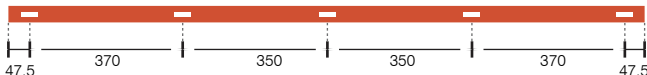
L 2144mm



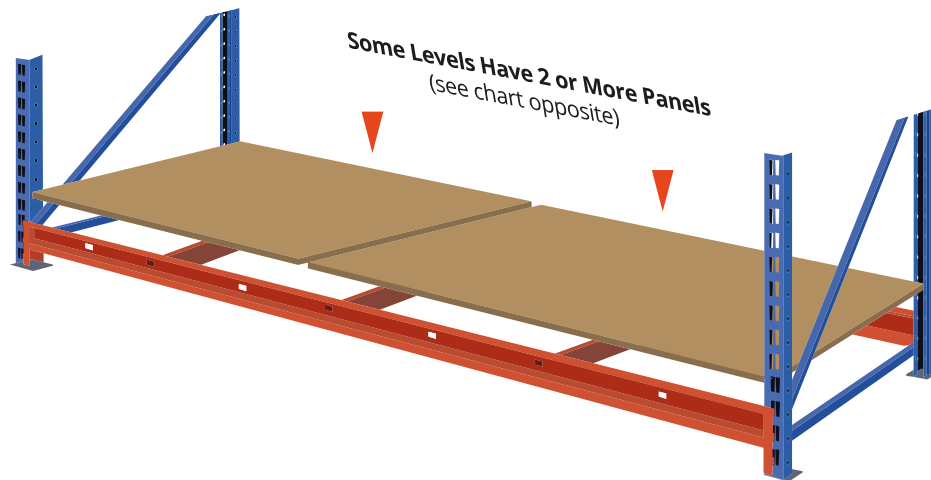
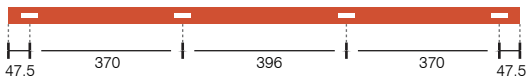
L 1839mm



L 1534mm



L 1229mm



Tools Required

Rubber Mallet, 5mm Allen Key, 10mm Socket Set

Safety Precaution

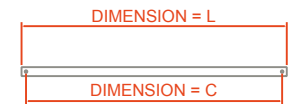
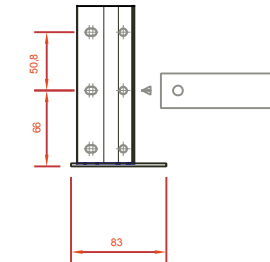
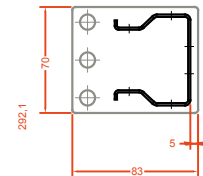
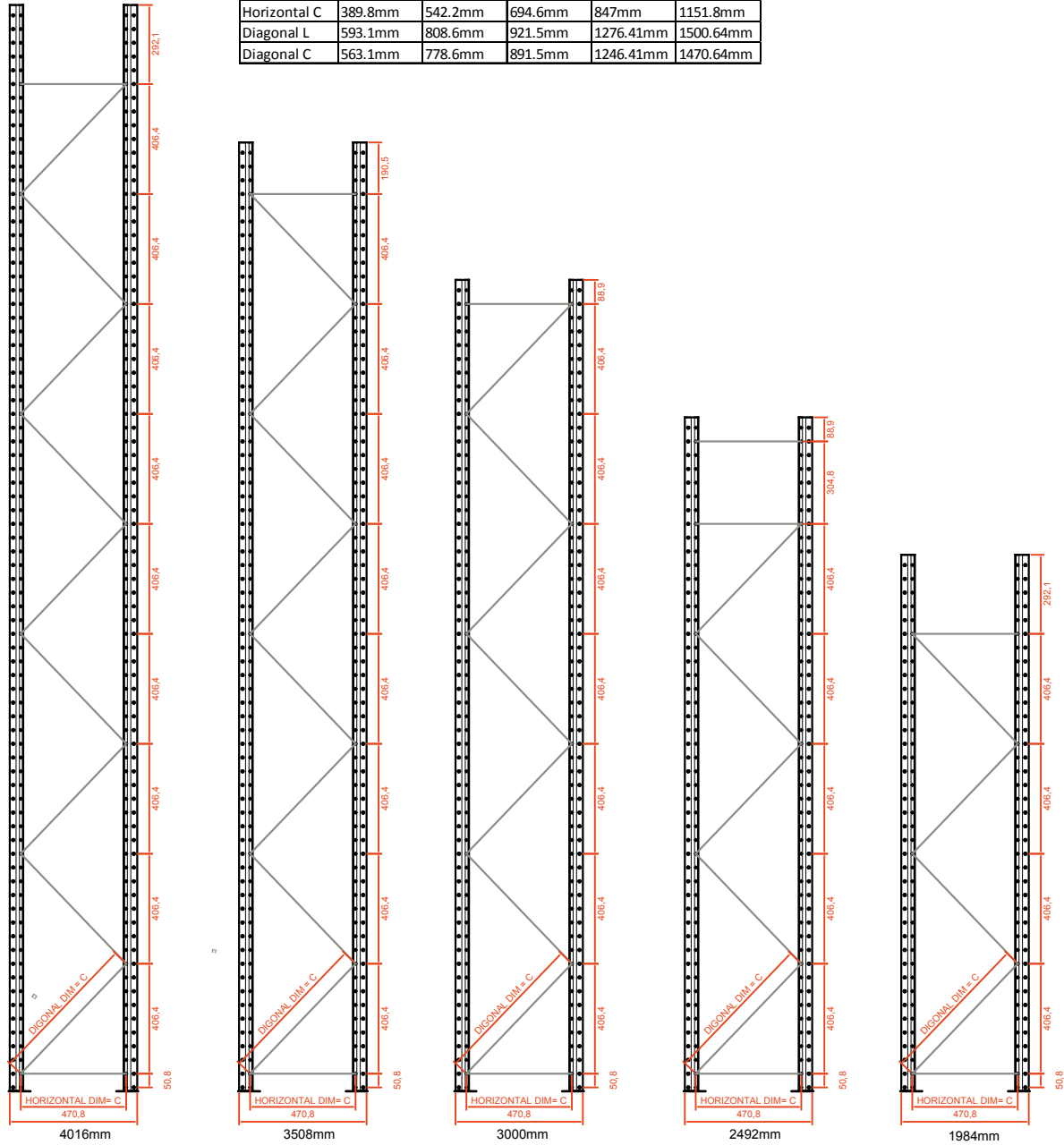
Two competent people wearing **safety gloves**, **safety shoes** and **protective eyewear** are recommended to undertake the assembly.

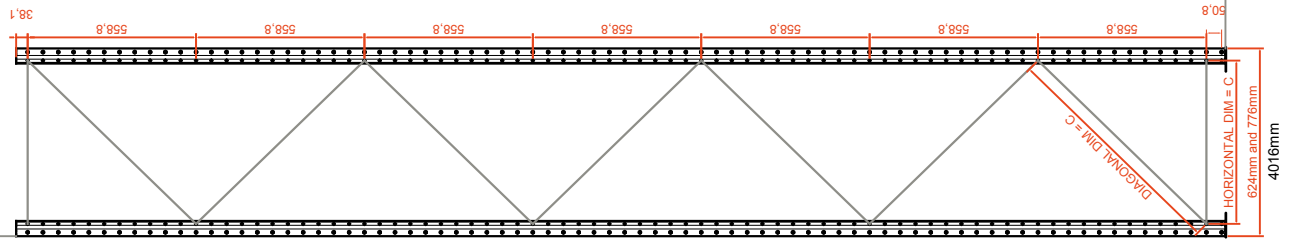
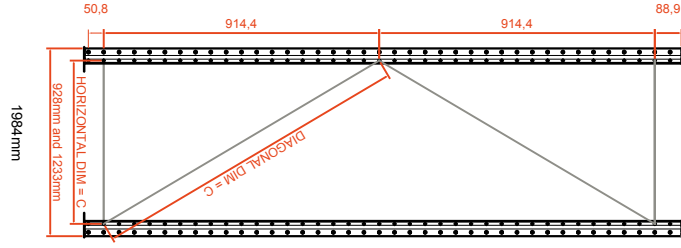
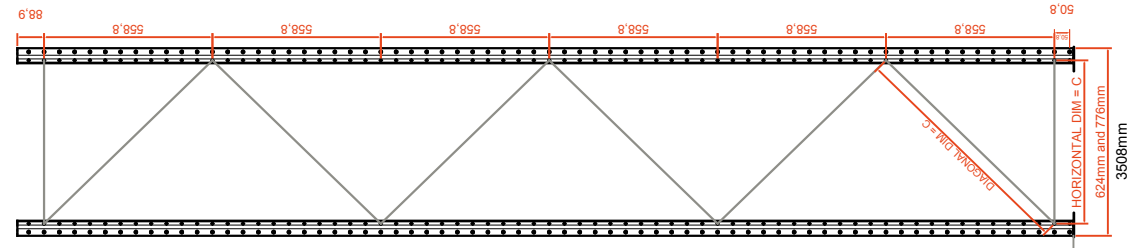
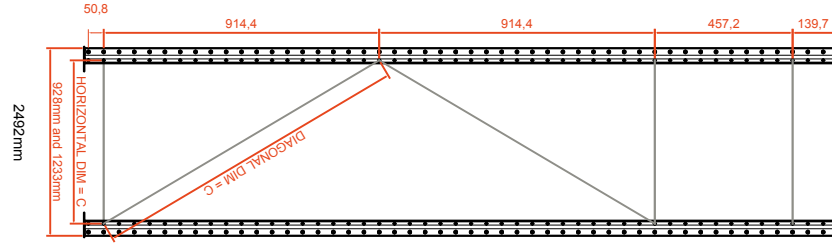
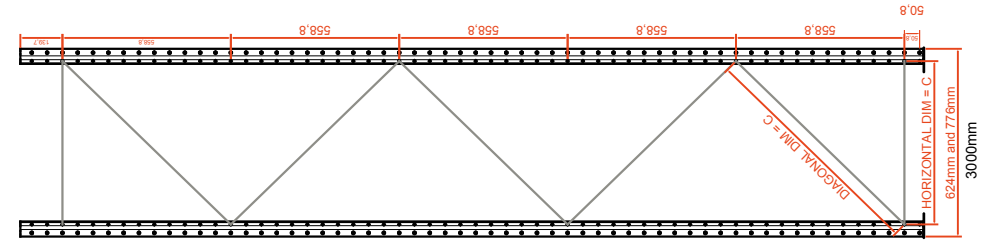
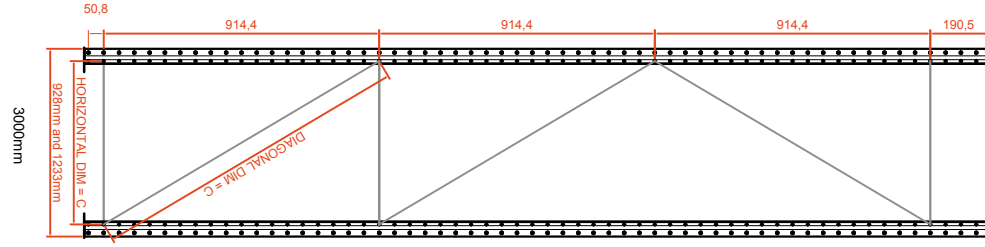
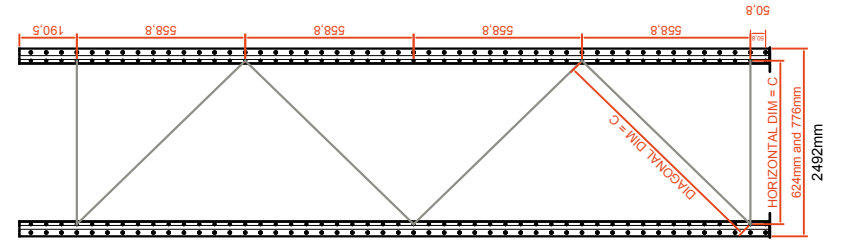
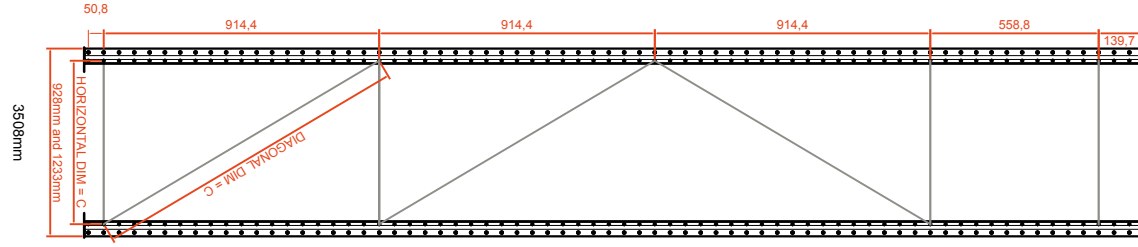
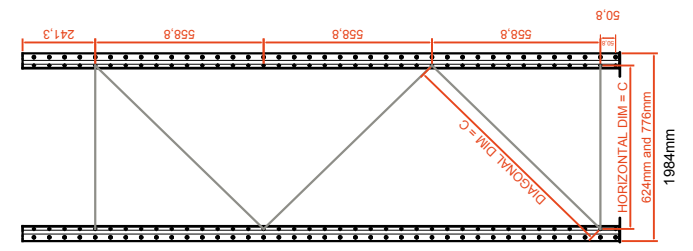
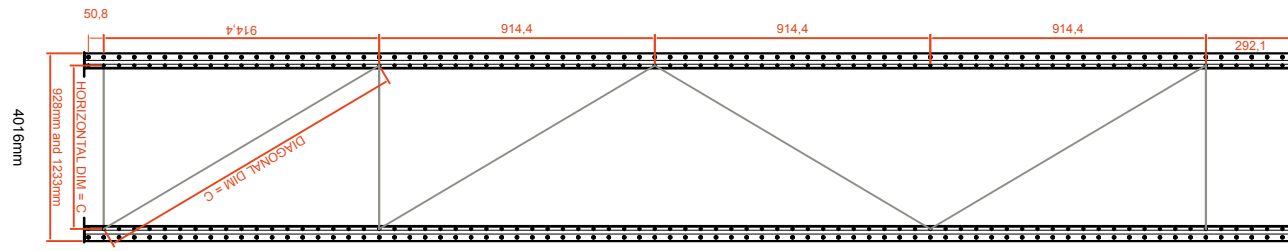
Attention

If your **shelving's height to depth ratio is greater than 4:1**, the bay should be fixed to the **floor** or to the **wall**!

Nom. Panel size	Chipboard Decking		Steel Decking		Mesh Decking	
	No. of panels per level	No. of deck supports	No. of panels per level	No. of deck supports	No. of panels per level	No. of deck supports
1220 x 457	1	0	4	0	1	0
1220 x 610	1	3	4	2	1	3
1220 x 762	1	3	4	2	1	3
1220 x 915	1	3	4	2	1	3
1220 x 1220	1	3	4	2	1	3
1525 x 457	1	0	5	0		
1525 x 610	1	3	5	2		
1525 x 762	1	3	5	2		
1525 x 915	1	3	5	2		
1525 x 1220	1	3	5	2		
1830 x 457	1	0	6	0	2	0
1830 x 610	1	3	6	2	2	3
1830 x 762	1	3	6	2	2	3
1830 x 915	1	3	6	2	2	3
1830 x 1220	2	3	6	2	2	3
2135 x 457	2	0	7	0	2	0
2135 x 610	2	3	7	2	2	3
2135 x 762	2	4	7	2	2	4
2135 x 915	2	4	7	2	2	4
2135 x 1220	2	5	7	2	2	5
2440 x 457	1	0	8	0	2	0
2440 x 610	1	4	8	2	2	4
2440 x 762	2	4	8	2	2	4
2440 x 915	2	4	8	2	2	4
2440 x 1220	2	5	8	2	2	5
2745 x 457	2	0	9	0	3	0
2745 x 610	2	5	9	2	3	5
2745 x 763	2	5	9	2	3	5
2745 x 915	2	5	9	2	3	5
2745 x 1220	2	5	9	2	3	5

Nom Size	471mm	624mm	776mm	928mm	1233mm
Horizontal L	419.8mm	572.2mm	724.6mm	877mm	1181.78mm
Horizontal C	389.8mm	542.2mm	694.6mm	847mm	1151.8mm
Diagonal L	593.1mm	808.6mm	921.5mm	1276.41mm	1500.64mm
Diagonal C	563.1mm	778.6mm	891.5mm	1246.41mm	1470.64mm





Nom Size	471mm	624mm	776mm	928mm	1233mm
Horizontal L	419.8mm	572.2mm	724.6mm	877mm	1181.78mm
Horizontal C	389.8mm	542.2mm	694.6mm	847mm	1151.8mm
Diagonal L	593.1mm	808.6mm	921.5mm	1276.41mm	1500.64mm
Diagonal C	563.1mm	778.6mm	891.5mm	1246.41mm	1470.64mm